



*Impress Guide*

# ***Chapter 9***

## ***Slide Shows***

*Transitions, animations, and more*

*OpenOffice.org*

## Copyright

This document is Copyright © 2007 by its contributors as listed in the section titled **Authors**. You can distribute it and/or modify it under the terms of either the GNU General Public License, version 2 or later (<http://www.gnu.org/licenses/gpl.html>), or the Creative Commons Attribution License, version 3.0 (<http://creativecommons.org/licenses/by/3.0/>) or later.

All trademarks within this guide belong to their legitimate owners.

## Authors

Jean Hollis Weber  
Peter Hillier-Brook

## Feedback

Maintainer: Jean Hollis Weber  
Please direct any comments or suggestions about this document to:  
[authors@user-faq.openoffice.org](mailto:authors@user-faq.openoffice.org)

## Publication date and software version

Published 05 July 2007. Based on OpenOffice.org 2.2.



You can download an editable version of this document from  
<http://oooauthors.org/en/authors/userguide2/published/>

# Contents

---

Copyright.....	i
Authors.....	i
Feedback.....	i
Publication date and software version.....	i
Putting together a slide show.....	1
Choosing basic settings for a slide show.....	1
Hiding slides so they do not appear in a show.....	3
Showing slides in a different order.....	4
Setting up a custom slide show.....	4
Editing, deleting, or copying a custom slide show.....	5
Using slide transitions.....	6
Setting the timing of automatic slide changes.....	6
Applying a slide transition effect.....	7
Removing a transition effect.....	7
Using slide animation effects.....	8
Applying an animation effect.....	8
Starting an animation effect.....	9
Choosing additional properties of an animation effect.....	10
Example: Using multiple animation effects.....	10
Advanced animation effects.....	13
Removing animation effects.....	15
Using interactions.....	15

## Putting together a slide show

OpenOffice.org Impress gives you the tools to organize and display a slide show, including:

- Which slides to show and in what sequence
- Whether to run the show automatically or manually
- Transitions between slides
- Animations on individual slides
- Interactions: what happens when you click a button or link

Most tasks associated with putting together a show from your slides are best done in Slide Sorter view. Choose **View > Slide Sorter** from the menu bar or click the Slide Sorter tab at the top of the workspace. All of your slides appear in the workspace; you may need to scroll to see them all.

### Choosing basic settings for a slide show

Basic settings for a slide show include which slide to start from, the way you advance the slides, the type of presentation, and pointer options.

Choose **Slide Show > Slide Show Settings**. The Slide Show dialog (Figure 1) appears.

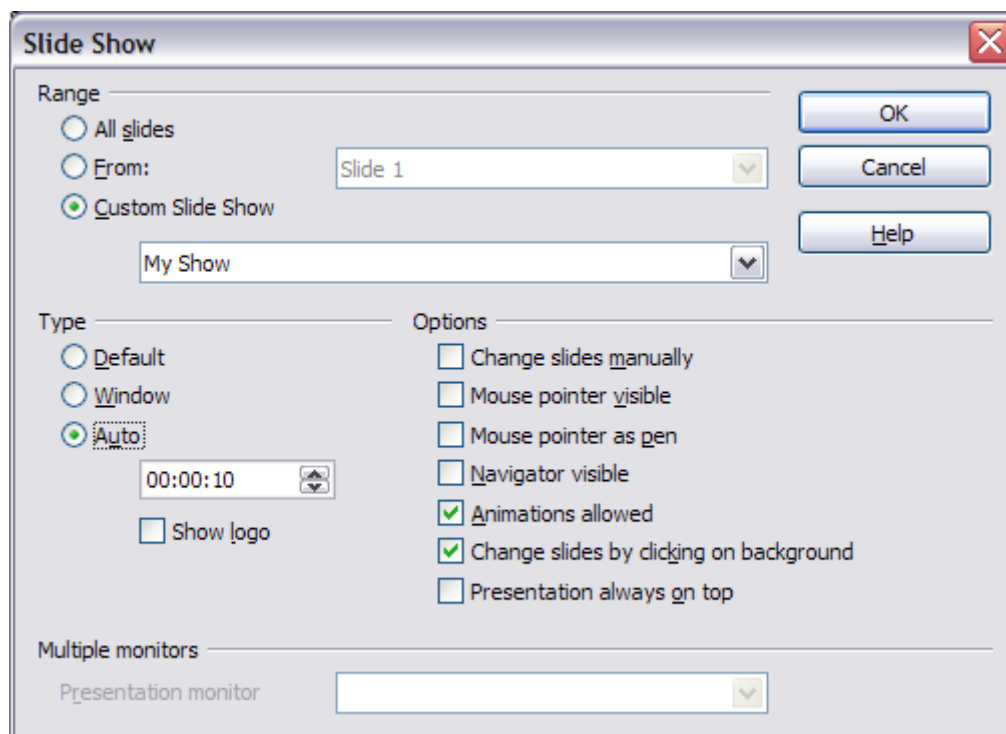


Figure 1: Choosing slide show settings

In the *Range* section, choose which slides to include in the slide show:

- **All slides** includes all of the slides except for those marked Hidden (see “Hiding slides so they do not appear in a show” on page 3). Slides are shown in the sequence they occur in the file. To change the sequence, either rearrange the slides in the slide sorter or choose a custom slide show (see “Showing slides in a different order” on page 4).
- **From:** starts the show at a slide other than the first. For example, you might have several slides at the beginning that describe you and your company, but when you present this show to your work colleagues, you want to skip that introduction.
- **Custom Slide Show** shows the slides in a different sequence that you have previously set up. This choice is not available until after you set up a custom slide show (see “Showing slides in a different order” on page 4). You can set up as many different custom shows as you wish from one set of slides; they will appear in the drop-down list under this choice.

In the *Type* section, choose how the slides will be displayed:

- **Default** shows the slides full screen, without the OpenOffice.org program controls visible, and exits the show after the last slide.
- **Window** runs the slide show in the OpenOffice.org program window and exits the show after the last slide.
- **Auto** restarts the slide show after the last slide. A pause slide is displayed between the last slide and the start slide. Press the *Esc* key to stop the show.

In the box under this choice, specify the length of time before the show restarts. If you enter zero, the show restarts immediately without showing a pause slide.

To display the OpenOffice.org logo on the pause slide, select the **Show logo** checkbox. The logo cannot be changed.

In the *Options* section:

- **Change slides manually** prevents slides from changing automatically. This choice overrides the **Auto** selection under *Type*.
- **Mouse pointer visible** shows the mouse pointer during a slide show. If you do not have a laser pointer or other device, this can be quite useful.
- **Mouse pointer as pen** enables you to write or draw on slides during the presentation. Anything you write with the pen is not saved when you exit the slide show. The color of the pen cannot be changed.
- **Navigator visible** displays the Navigator during the slide show. For more about the Navigator, see Chapter 1 (Introducing Impress).
- **Animations allowed** displays all frames of animated GIF files during the slide show. If this option is not selected, only the first frame of an animated GIF file is displayed. (This has nothing to do with the slide animations described in “Using slide animation effects” on page 8.)

- **Change slides by clicking on background** advances to the next slide when you click on the background of a slide. (Other ways of advancing to the next slide include pressing the spacebar on the keyboard.)
- **Presentation always on top** prevents any other program window from appearing on top of the presentation.

In the *Multiple monitors* section, you can choose which monitor to use for full screen slide show mode, if the current desktop is displayed on more than one monitor. If the current desktop spans only one monitor, or if the multiple-monitor feature is not supported on the current system, you cannot select another monitor. By default the primary monitor is used for slide show mode.

---

**Notes** This feature is new in OpenOffice.org Impress 2.1.  
This setting is saved in the user configuration and not inside the document.

---

## Hiding slides so they do not appear in a show

You may not want to show all of the slides in a particular show. You can either hide some of the slides or set up a custom slide show. Which method is best depends on your needs. For example, you may have draft slides that you will show when they are finished, or you may have some slides that contain information for yourself, not your audience.

To hide a slide:

- 1) In the Slides pane, or in Slide Sorter view, select the slides that you want to hide.
- 2) Click the **Show/Hide Slide** icon on the Slide View toolbar, or choose **Slide Show > Show/Hide Slide**. The slide number is now in a box with a diagonal line through it, to indicate that it is hidden (see Figure 2). The slide remains in the file.

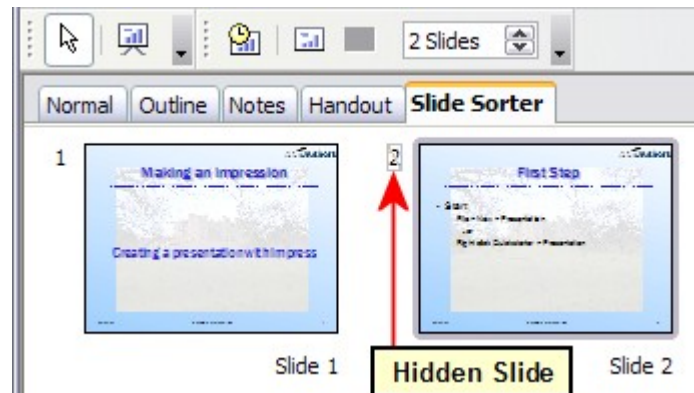


Figure 2: Slide 2 is hidden

To show a hidden slide:

- 1) In the Slides pane, or in Slide Sorter view, select the hidden slides that you want to show.
- 2) Click the **Show/Hide Slide** icon on the Slide View toolbar, or choose **Slide Show > Show/Hide Slide**.

## Showing slides in a different order

To show the slides in a different order, you can either rearrange them in the slide sorter or set up a custom slide show. You can define as many custom slide shows as you need from one set of slides. In a custom slide show, you can choose which slides to include as well as the order in which they are shown. Any slides marked Hidden will not appear in a custom show.

### Setting up a custom slide show

To set up a custom slide show:

- 1) Choose **Slide Show > Custom Slide Show** from the menu bar.
- 2) On the Custom Slide Shows dialog (Figure 3), select the **Use Custom Slide Show** checkbox and click **New**.

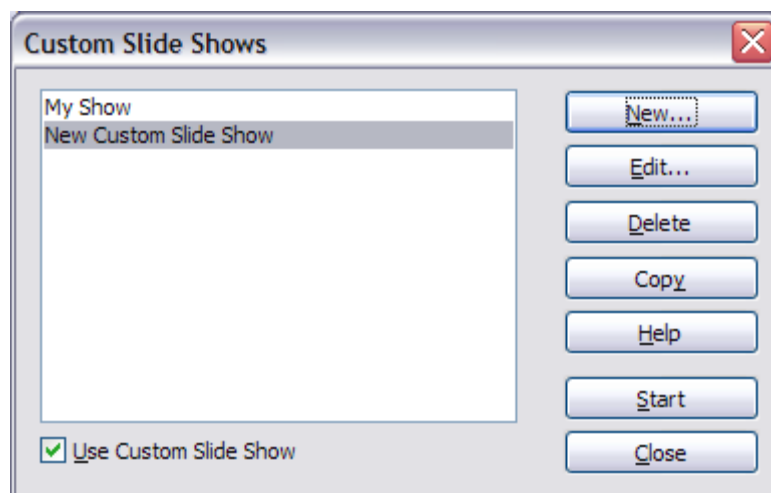


Figure 3: Start here to define or change a custom slide show

- 3) On the Define Custom Slide Show dialog (Figure 4), type a name for the new custom show. Then, in the *Existing slides* list, select the slides to include in the show, **in the order you want to show them**. Click the >> button to include the slides in the *Selected slides* list. In Figure 4, Slide 1 has been included, and Slide 2 has been selected but not yet included.

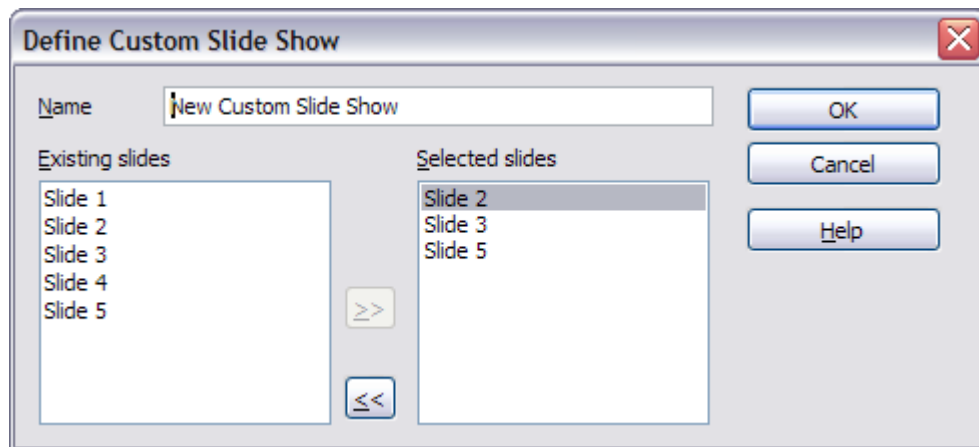


Figure 4: Defining a custom slide show

You can select and include several slides at the same time. Hold down the *Shift* key and click the first and last slide in a group to select that group (for example, slides 3 through 7), or hold down the *Control* key and click on individual slides to select them (for example, slides 3, 5, and 9).

---

**Note** If you include several slides at the same time, they are added to the *Selected slides* list in numerical order regardless of the order in which you selected them. In other words, if you click on slides 3, 9, and 5 in that order and add them all at the same time, they will be included in the *Selected slides* list in this order: 3, 5, 9. To put them in a different order, either select and include them one at a time or select and drag them up or down the list.

---

**Tip** Slides are added to the *Selected slides* list after the slide that is highlighted in that list. The last slide added is highlighted unless you select a different one. For example, you may have added slides 1, 2, 3 and 9, in that order. Slide 9 will be highlighted. If you now want to add slide 15 between slides 2 and 3, select 2 in the *Selected slides* list, then select slide 15 in the *Existing slides* list and click >>.

You can also add slide 15 at the end of the *Selected slides* list and then drag it up to where you want it in the sequence.

---

- 4) When you are done arranging the order of the slides, click **OK** to save this custom show and return to the Custom Shows dialog.

### Editing, deleting, or copying a custom slide show

To edit a custom slide show (add, remove, or change the order of slides, or change the name of the show), select it in the Custom Shows dialog (Figure 3) and click **Edit**.

To delete a custom slide show, select it in the Custom Shows dialog and click **Delete**. Deletion is immediate; no confirmation message appears.

To create a copy of a slide show, select it in the Custom Shows dialog and click **Copy**. You can now edit the copy to rename it or add, remove, or change the order of slides in it.



You can run a custom slide show (for example, to test it) from the Custom Shows dialog, if the **Use Custom Slide Show** checkbox is selected. Select the slide show from the list and click **Start**.

When you are done working with custom slides shows, click **Close** to save all changes and close the Custom Shows dialog.

## Using slide transitions

---

Slide transitions are the effects that take place when one slide gives way to the next one in the presentation, like *Roll down from top* or *Fly in from left*. They add dynamic flair to a slideshow, smoothing the transition between slides.

You can add transitions while in Slide Sorter view or in Normal view. To see the effect of a selection, you need to be in Normal view and select the **Automatic preview** checkbox on the Slide Transition page of the Tasks pane.

You can apply a single type of transition to all slides in the presentation or apply a different transition to any single slide, even having a different transition for every slide in the show. While using many different transitions may be fun to do, it may not give your show a professional appearance.

---

**Tip** If you want most of the slides to have the same transition, but a few to be different, you may find it easiest to apply one transition to all slides and then change only the ones you want to be different.

---

## Setting the timing of automatic slide changes

You can set up a slide show to run automatically, either unattended or while you speak. To set the default time for slides to be displayed before changing to the next slide, go to the Slide Transition pane (Figure 5), leave the transition effect set to No Transition, choose **Automatically after** in the *Advance slide* section, set a time, and click the **Apply to All Slides** button.

To vary the times for some slides, choose **Slide Show > Rehearse Timings** from the menu bar, or click the **Rehearse Timings** icon on the Slide Show toolbar. The slide show begins in full-screen mode, and a timer appears in the lower left-hand corner of the screen.

When you want to advance to the next slide, click the timer. To keep the default setting for this slide, click the slide, not the timer. Continue for all slides in your presentation. Impress records the display time for each slide. Save your presentation. When you next look at the time set under Automatically after, you will see that the times have changed to match what you set when rehearsing.

If you want the whole presentation to auto-repeat, open the menu **Slide Show > Slide Show Settings**. Click **Auto** and **OK**.

## Applying a slide transition effect

- 1) In the Tasks pane, choose **Slide Transition** (Figure 5).
- 2) In the Slides pane or Slide Sorter view, select the slides to which you want to apply the transition. If you want the transition to apply to all slides, you do not need to select them first.
- 3) In the *Apply to selected slides* list, select a transition.
- 4) Modify the selected transition by changing the speed or adding a sound, in the *Modify transition* area.

If you choose to play a sound, select it in the *Sound* list. The **Loop until next sound** checkbox now becomes active. Select this checkbox to play the sound repeatedly until another sound starts.

- 5) Choose how to advance to the next slide: manually (on mouse click) or automatically. If you choose automatically, you can specify how long the slide remains visible before it automatically advances to the next slide.
- 6) If you want the effect you just defined to apply to all slides in the show, click the **Apply to All Slides** button.
- 7) To preview the transition effect, click the **Play** button.
- 8) To start the slide show from the current slide (so you can see all the transitions), click the **Slide Show** button.

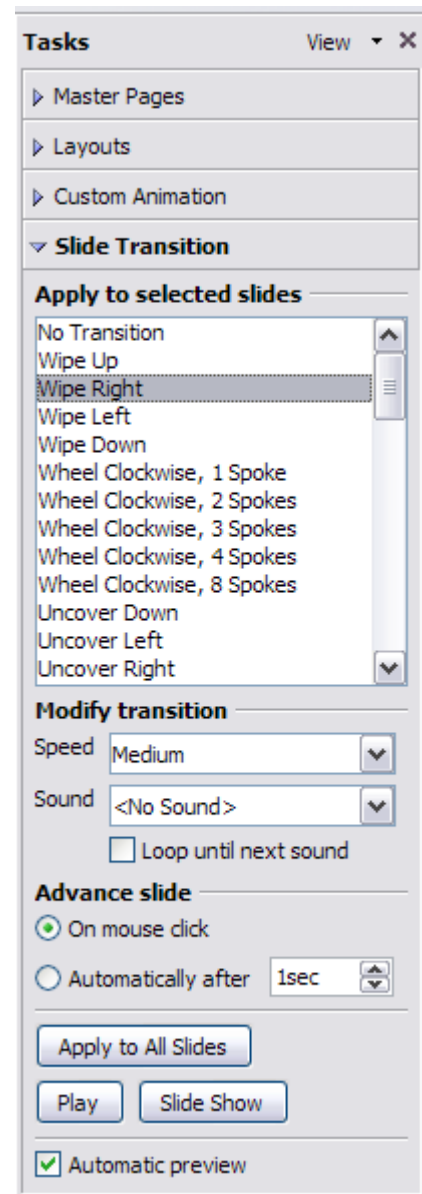


Figure 5: Task pane, showing Slide Transition page

## Removing a transition effect

- 1) Select the desired slides.
- 2) Choose **No Transition** in the list on the Slide Transition page of the Tasks pane.

## Using slide animation effects

Slide animations are similar to transitions, but they are applied to individual elements on a single slide—a title, chart, image, or individual bullet point. Animations can make a presentation more lively and memorable. Just as with transitions, heavy use of animations can be fun, but distracting and even annoying for an audience expecting a professional presentation.

Animation effects need to be applied from Normal View so that you can select individual objects on a single slide.

### Applying an animation effect

- 1) In Normal View, display the desired slide. Select the object you want to animate.
- 2) In the Tasks pane, choose **Custom Animation** (Figure 6).
- 3) Click **Add**. The Custom Animation dialog (Figure 7) appears. Choose an effect from one of the pages of this dialog, and choose the speed or duration of that effect. See the example on page 10 for some hints on how to combine multiple effects.
  - To choose the starting animation for the object, for example *Fly In* or *Dissolve In*, use the *Entrance* page.
  - To choose an effect such as a different font color or blinking text, use the *Emphasis* page.
  - To choose the effect when leaving this object, use the *Exit* page.
  - To choose the direct of movement of an animation, use the *Motion Paths* page.
- 4) Click **OK** to save the effect and return to the Custom Animation page on the Task pane. Here you can choose how to start the animation, change the speed, and some additional properties of the selected effect.

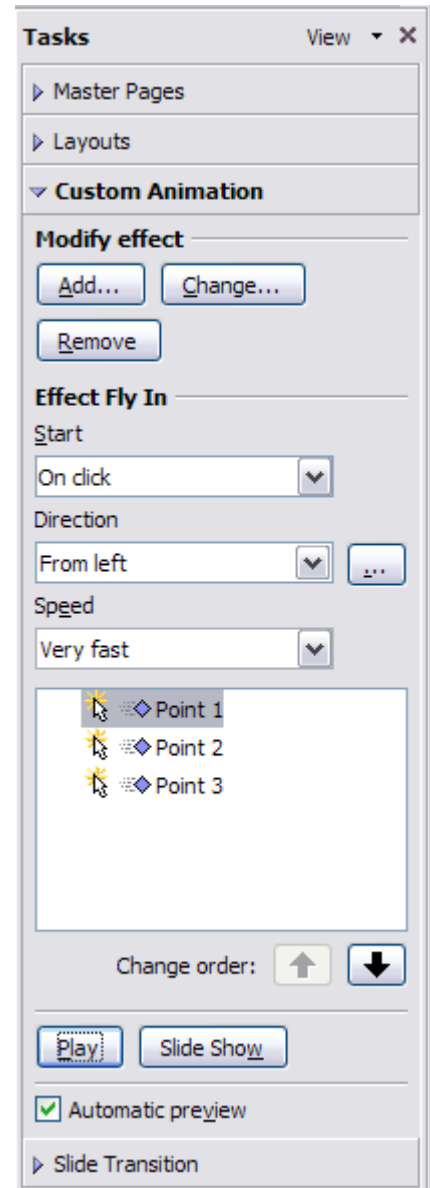


Figure 6: Task pane, showing Custom Animation page

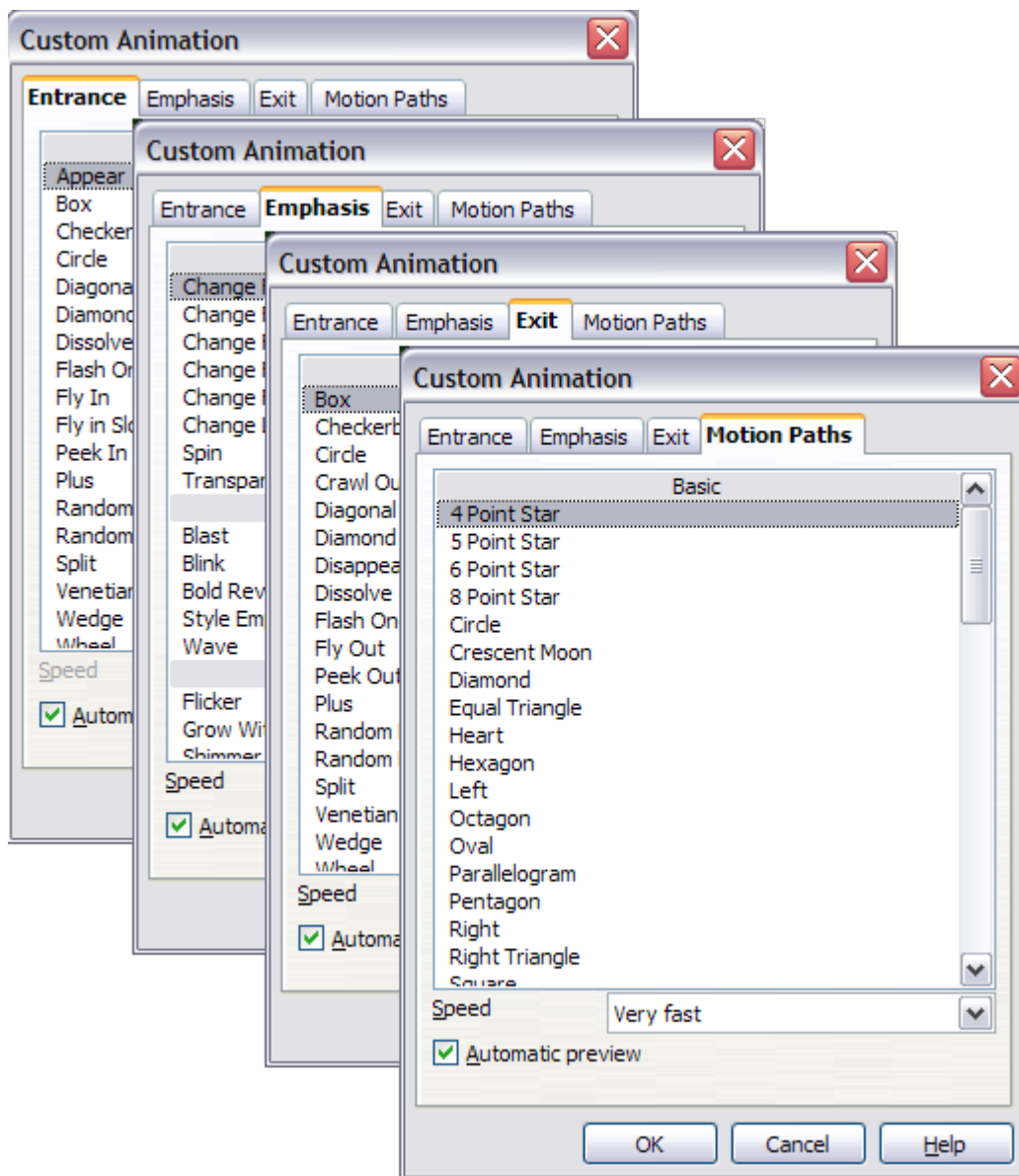


Figure 7: Custom Animation dialog. Choices may vary depending on the selected object; for example, pictures and text have different Emphasis choices.

### Starting an animation effect

You have three choices for starting an animation effect:

*On click*—the animation stops at this effect until the next mouse click.

*With previous*—the animation runs at the same time as the previous animation.

*After previous*—the animation runs as soon as the previous animation ends.

## Choosing additional properties of an animation effect

Many animations have properties that you can set or change. For example, if you chose the Change Font Color effect on the *Emphasis* page, you can specify the font color. If you chose Fly In on the *Entrance* page, you can specify the direction from which the object flies in.

The label on the properties box changes depending on the choices available for each effect. For example, a Fly In effect has a box labelled *Direction* and a Change Font Color effect has a box labelled *Font color*.

## Example: Using multiple animation effects

To illustrate how you can set up multiple effects, let's look at a common animation: list items fly in one at a time from the bottom of the slide, and as each new item appears, the previous items change to a different color. Here is how to create these effects.

### Step 1. Apply the “fly in” effect to individual list items.

- 1) Display the *Custom Animation* page of the Task pane.
- 2) Create a slide with several items in a bullet list. Our example slide (Figure 8) has four.

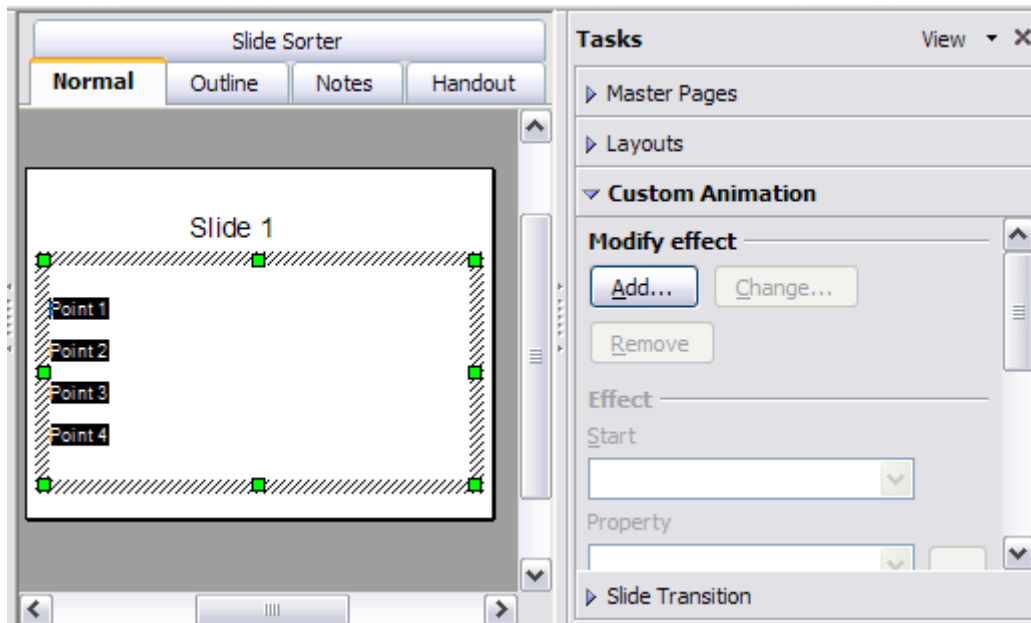


Figure 8: Example slide for multiple animations

- 3) Select all four items. Click **Add** on the Custom Animation pane.
- 4) On the *Entrance* page of the Custom Animation dialog (Figure 9), select **Fly In**, optionally change the Speed to **Medium**, and click **OK**.
- 5) The four effects you have just set up are listed in the animations list on the *Custom Animation* page, as shown in Figure 10.

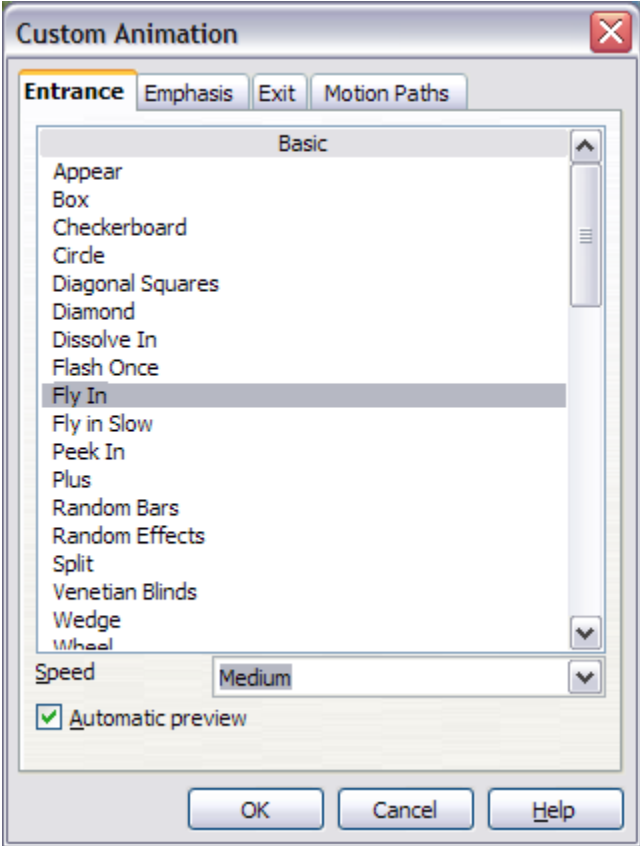


Figure 9: Choosing an entrance effect

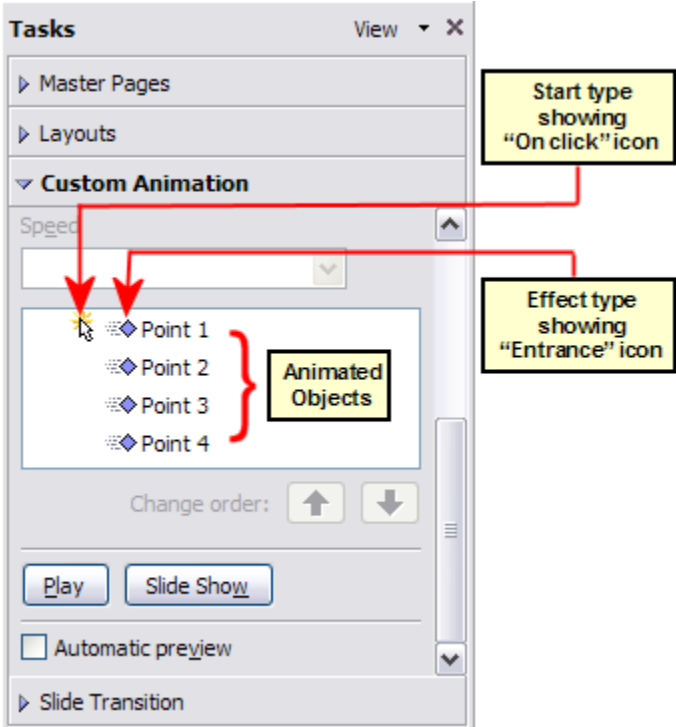


Figure 10: Animation list, showing four items

## Step 2. Apply the “change font color” effect to some list items.

Now we want to set each of the first three list items to change color when the following item appears on the slide. To do this:

- 1) Select the first three items on the slide (not the animations list) and click **Add** in the Custom Animation pane. This time we go to the *Emphasis* page of the Custom Animation dialog and choose **Change Font Color**, as shown in Figure 11. Click **OK** to save this effect.

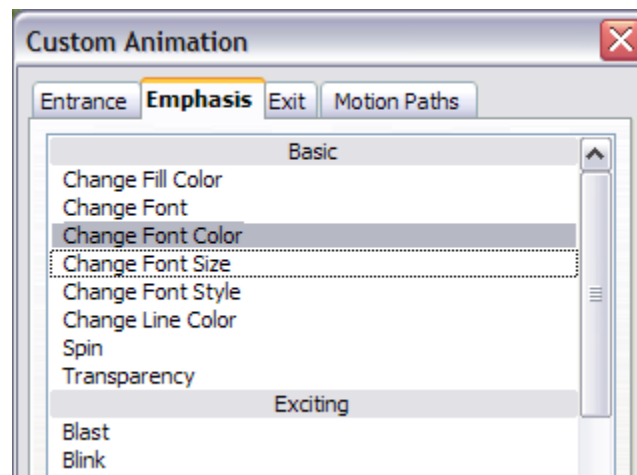


Figure 11: Choosing an emphasis effect

- 2) Notice that the three new animations are listed at the bottom of the animations list, and the “type of effect” icon for these three effects (in the second column) is different from the icon for the first four effects (see Figure 12).

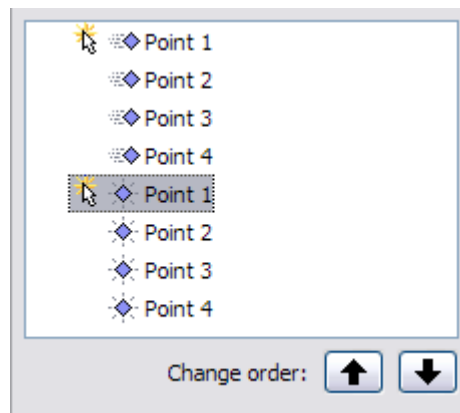


Figure 12: Animation list after adding a second set of animations

- 3) You could, if you wish, select any of the last three items and choose a different color from the *Font color* list on the Custom Animation pane.
- 4) Use the **Change order:** up-arrow button to move each of the last three items up the list to just under the other item with the same name. The animation list will now look like Figure 13.

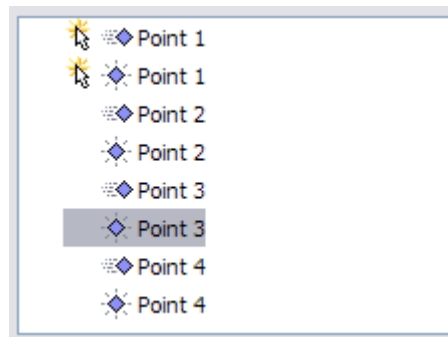


Figure 13: Animation list after moving items into required sequence

### Step 3. Change the timing for some list items from With previous to On click

Notice that all of the items on the animations list (except for the two “Point one” items) are set to start at the same time as the previous item. However, we want the second “Point two” animation and the second “Point three” animation to also occur On click.

- 1) Select these items, and then choose **On click** from the *Start* list. The animation list now looks like Figure 14.
- 2) Save the file.
- 3) Test this set of animations by clicking the **Slide Show** button.

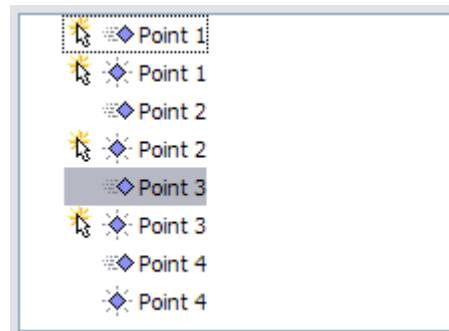


Figure 14: Final list of animations

## Advanced animation effects

Click the Effect Options button [...] next to the properties drop-down list to display the Effect Options dialog.

---

**Note** What you see on the Effect Options dialog depends on the selected animation object. For example, the dialog has three pages for text objects but only two pages for picture objects (the *Text Animation* page does not appear). The Settings section on the Effect page also varies. Figure 15 shows the *Effect* page for a Direction effect, and Figure 16 shows the Settings section for a Font Color effect. For picture objects, the Text animation box on the *Effect* page is unavailable.

---



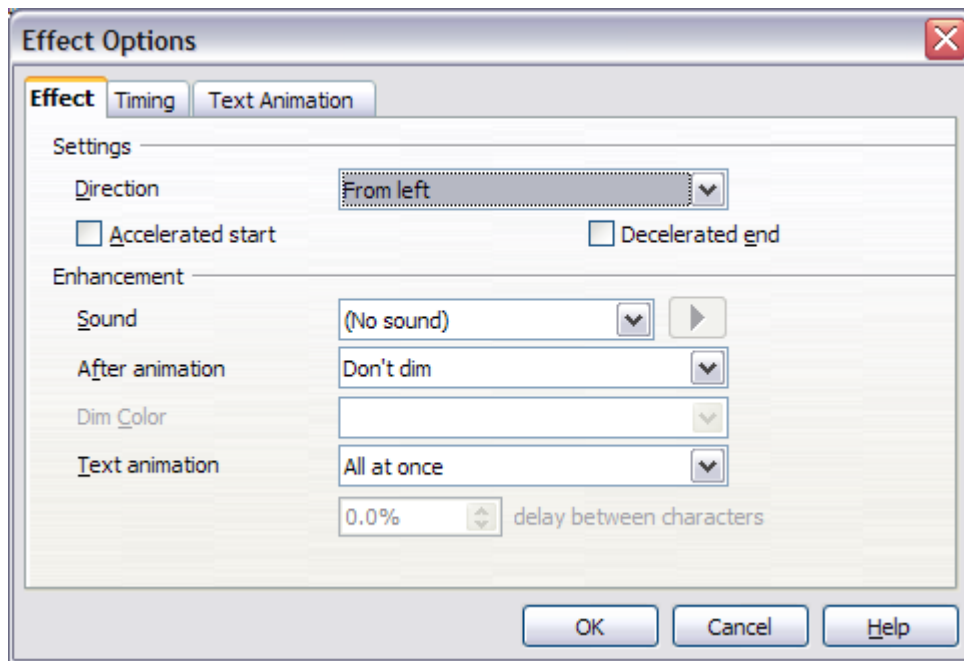


Figure 15: Effect option settings for a direction effect

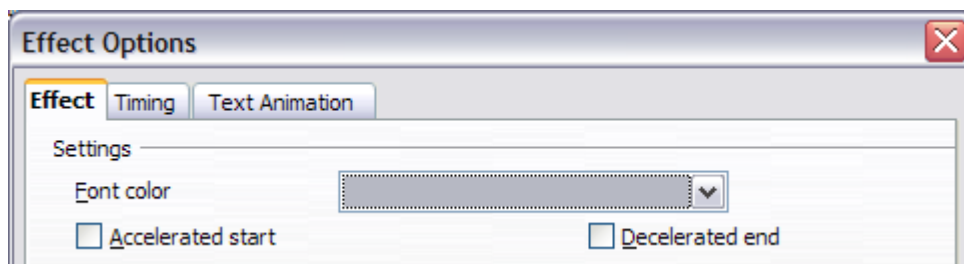


Figure 16: Effect option settings for a font color effect

On the *Effect* page of the Effect Options dialog (Figure 15) you can choose a sound to play, whether to dim or hide the object after animation, and (in the case of text objects) whether to animate the text all at once or word-by-word or letter-by-letter.

On the *Text Animation* page of the Effect Options dialog (Figure 17), you can group text in other ways: as one object, all paragraphs at once, or by first-level paragraphs (that is, one list item together with its sub-items, if any).

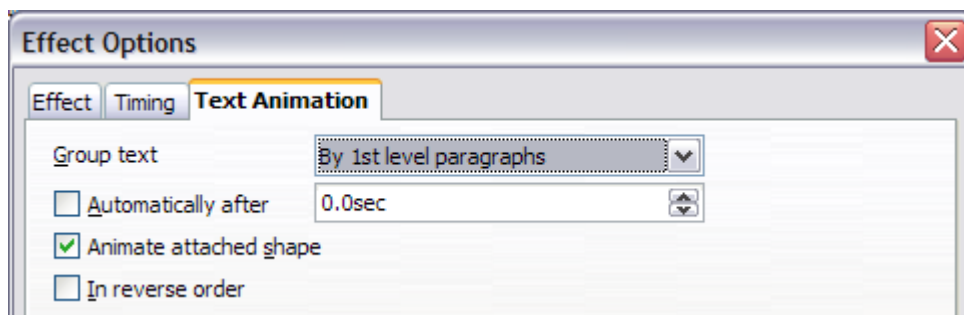


Figure 17: Text Animation effect options

The choices on the *Timing* page of the Effect Options dialog, shown in Figure 18, should be self-explanatory.

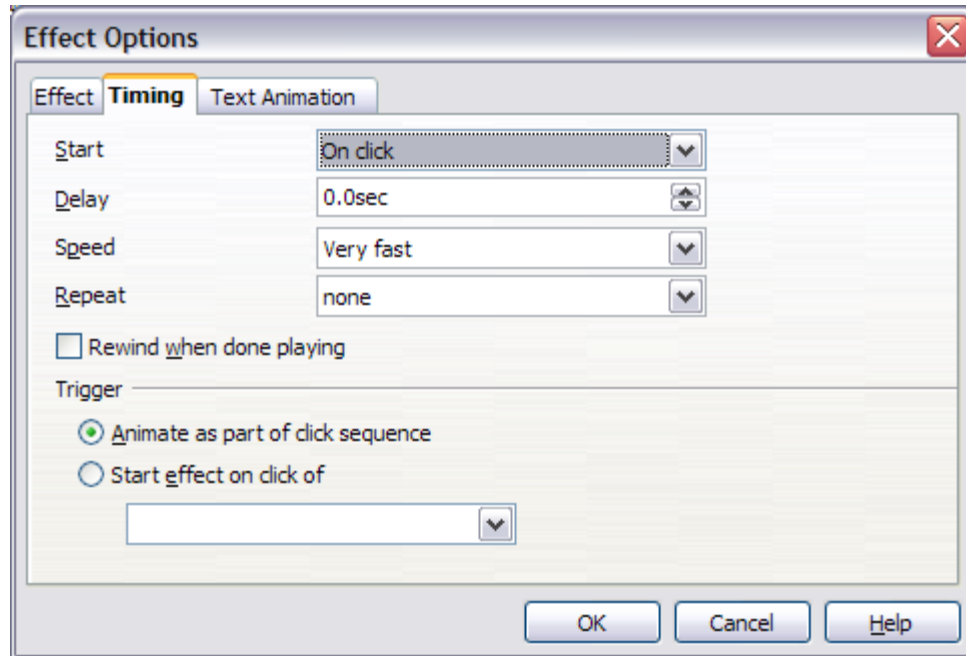


Figure 18: Timing page of Effect Options dialog

## Removing animation effects

- 1) On the *Custom Animation* page of the Task pane, select the desired object.
- 2) Click the **Remove** button.

## Using interactions

Interactions are things that happen when you click on an object in a slide. They are typically used with buttons or images, but text objects can also have interactions. Possible interactions include: go to previous slide, go to next slide, go to first slide, go to last slide, go to page or object (that is, a specific slide or named object in a slide), go to document, play sound, or run a macro.

To apply an interaction to an object (or change an interaction applied to an object), right-click on the object and choose **Interaction** from the pop-up menu. The Interaction dialog (Figure 19) appears. Select an interaction from the **Action at mouse click** drop-down list.

With some interactions, after you select one, the dialog changes to offer more choices. For example, Figure 20 shows the Interaction dialog after choosing Go to page or object.

---

**Tip** A sound interaction can be also applied using the Effect Options dialog (Figure 15).

---

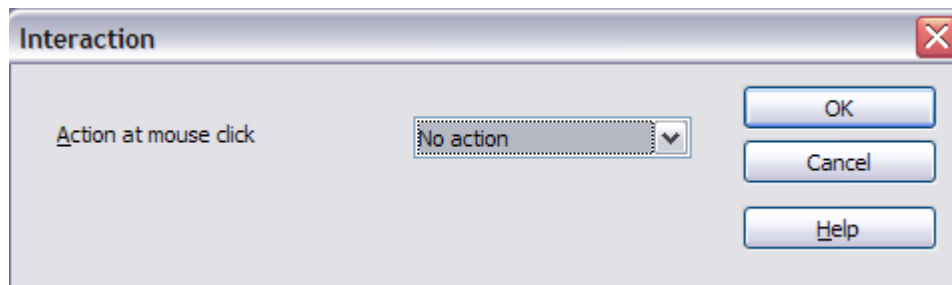


Figure 19: Interaction dialog before choosing an interaction

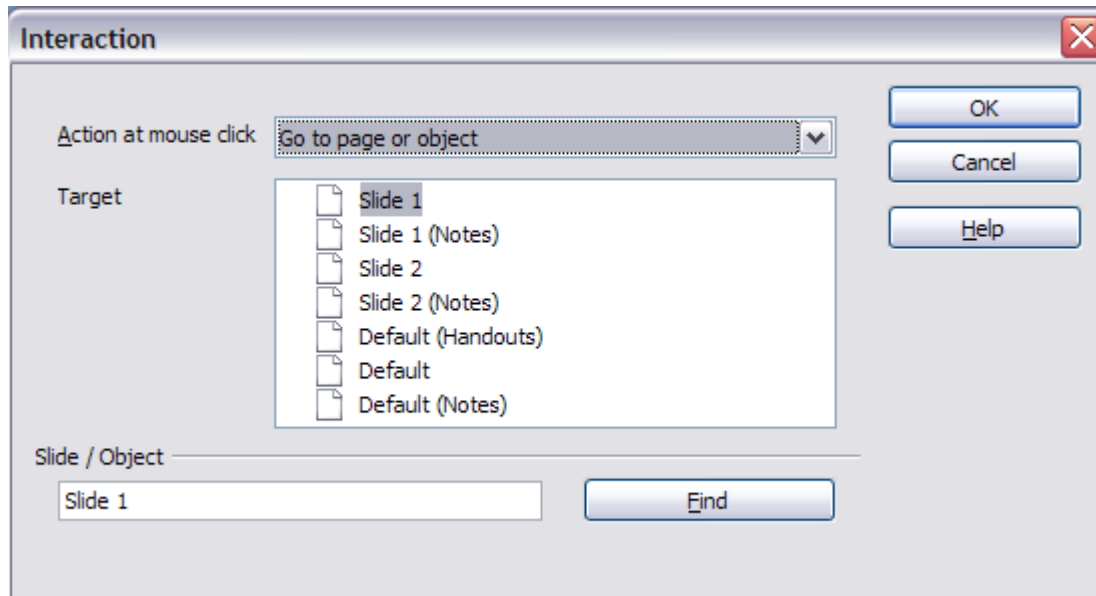


Figure 20: Interaction dialog after choosing the "Go to page or object" interaction, showing choices for the target slide or object